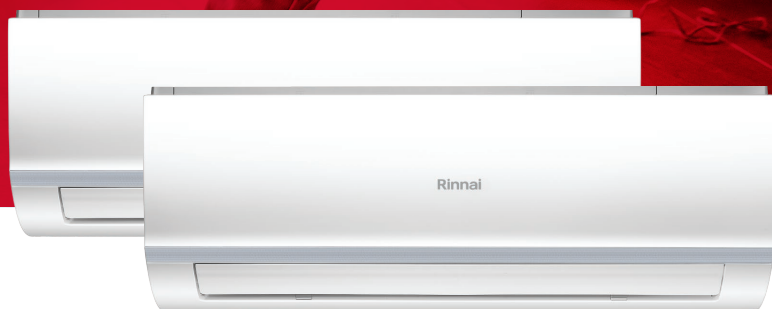


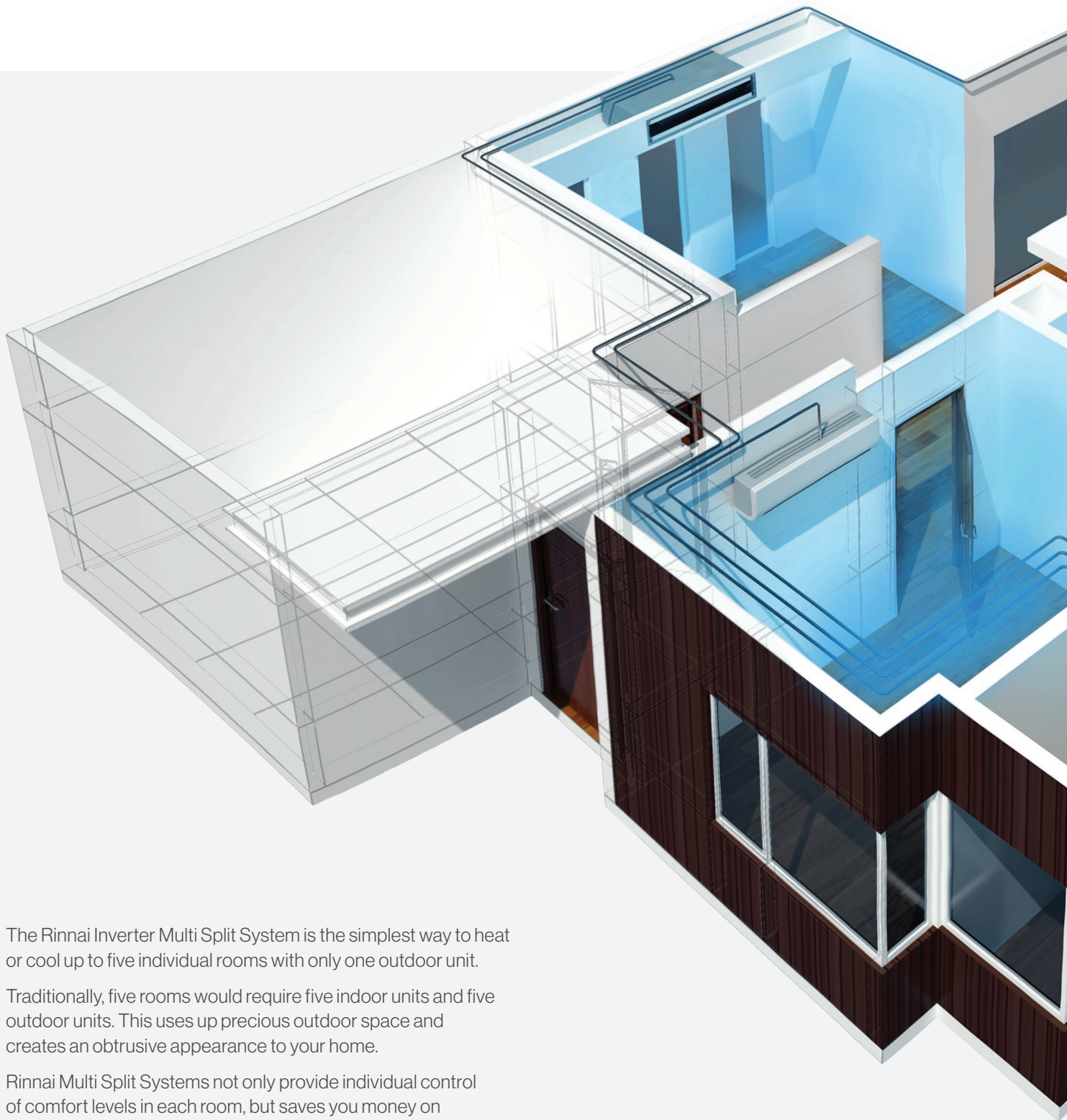
Rinnai



Inverter
Multi Split System



The perfect multi-room solution



The Rinnai Inverter Multi Split System is the simplest way to heat or cool up to five individual rooms with only one outdoor unit.

Traditionally, five rooms would require five indoor units and five outdoor units. This uses up precious outdoor space and creates an obtrusive appearance to your home.

Rinnai Multi Split Systems not only provide individual control of comfort levels in each room, but saves you money on running costs by either only heating or cooling individual rooms as required.



At Rinnai, we're all about comfort

For over 50 years, Rinnai has supplied Australian homes with a range of appliances that help people lead comfortable, safe and efficient lifestyles.

Being driven to create comfort means that we really care about our products and your experience from start to finish. We're focused on developing products with the latest technology and our level of quality is second-to-none, so you can rest assured knowing Rinnai will deliver.

Illustrative purposes only

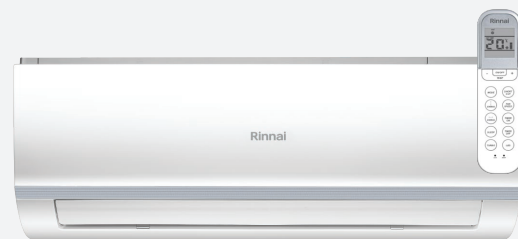
Customised Comfort

Rinnai Inverter Multi Split Systems offer 3 different indoor unit types (Wall Mounted, Slim Ducted and Compact Cassette) that can be used in a multitude of combinations. After selecting up to 5 indoor unit types, these are then paired with an outdoor unit (4 units to choose from) with capacities ranging from 7.1kW up to 13.kW. With a variety of unit types and capacities available, Rinnai has a system configuration to suit virtually any requirement.

Seamless & Sleek

The sleek Rinnai Wall Mounted Split Systems feature the latest in innovation. Equipped with features including Turbo Function to quickly cool and heat the room, they discreetly operate thanks to a cleverly designed air tunnel for greater air distribution.

Come home to comfort with the Rinnai Mobile App allowing you to control your Wall Mounted Split System using Wi-Fi from anywhere with an internet or network connection.



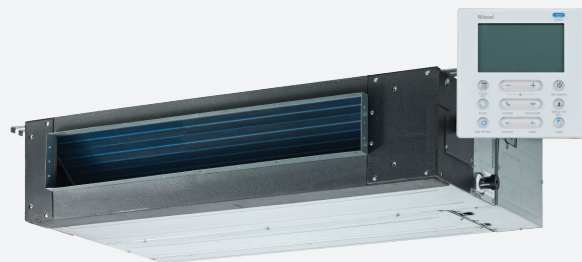
Wall Mounted Split System

Flexible & Functional

Compact & space saving in design, the Rinnai Slim Ducted and Compact Cassette indoor units are ideal for tight spaces.

Hidden away in a bulkhead or ceiling cavity, the Slim Ducted indoor unit operates quietly, so its out of sight and out of mind.

Utilise the most of your ceiling space with the low profile Inverter Cassette, suitable for use in the larger open plan areas of the home with its 360° air flow.



Ceiling Inbuilt Slim Ducted



Ceiling Mounted Compact Cassette

Features and Benefits



Wi-Fi Control**

Set your favourite temperature from anywhere and come home to ultimate comfort with our intuitive Android or Apple App. Wi-Fi comes standard with the Wall Mounted Split System and as optional extra with the Slim Ducted and Compact Cassette units.



Turbo Function†

Quickly cool in summer or swiftly warm in winter.



Sleep Mode†

Designed to control the temperature overnight to ensure high quality, comfortable sleep. Traditional sleep mode temperature control is one way; however our intelligent sleep mode system operates on two-way temperature control that modulates up and down to mimic outside ambient temperatures.



Auto Restart

Auto restart function in case of an electrical power outage provides you with complete peace of mind.



Super Fine Filter†

Provides extra protection by keeping fine particles out of the home and providing clean, cool air.



Timer

Designed to work around your lifestyle. Once set, the system will turn on and off at the specified times of the day, ensuring you wake up and come home to the perfect conditions.



Smart 3D DC Inverter

A faster, more controlled warm-up or cool-down is achieved by the advanced inverter control systems. It combines three Direct Current (DC) motor technologies working in perfect unison to provide you with:

- Higher efficiency
- Synchronised performance
- Lower running costs in comparison to conventional air conditioners



*For full terms & conditions visit www.rinnai.com.au

**Standard feature in Wall Mounted Split System & optional in Slim Ducted & Compact Cassette

†Available in Wall Mounted Split System only

Comfort at the touch of a button

Wi-Fi Control

The Rinnai Wall Mounted Split Units feature inbuilt Wi-Fi control via an App, with an optional Wi-Fi accessory available for the Compact Cassette and Slim Ducted Units.

Simple to activate and easy to use, the App can be downloaded via Google Play or the App Store on a compatible mobile device. Once installed and registered, you can operate your appliance on the go.

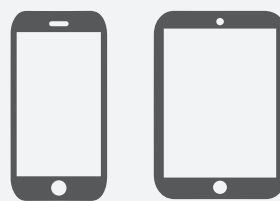
Basic functions like on/off, temperature control and fan speed can be accessed through the App. Best of all, the Wi-Fi control allows you to switch on your Air Conditioner from outside the home – creating the ultimate in convenience and comfort.

We're at your service

The National Customer Care Centre provides first class service and maintenance of your system, ensuring it's running at its highest efficiency - so you can enjoy the Rinnai experience for many years to come.

Operating 5 days a week
(Monday to Friday)

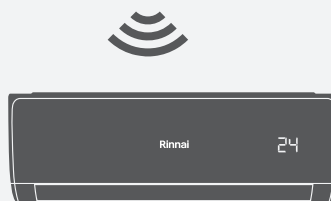
13 43 73



Turn your Air Conditioner on or off, set your temperature, fan speed and more remotely from anywhere in the world with an Internet connection.



Your home's internet router relays requests from the App to control your Air Conditioner just like the normal remote controller.



Set your favourite temperature before you come home - enjoy the comfort and energy savings.



Available to download via:

- Google Play
- App Store

Technical Information



Outdoor Unit

Multi Outdoor Unit			MON3H071	MON4H09	MON5H11	MON5H13
Number of connected Indoor Units		Qty	3	4	5	5
Power Supply (To Outdoor Unit)		V-Ph-Hz	220-240 -1-50			
Cooling	Rated Capacity (Range)	kW	7.1 (1.7 - 9.3)	9.6 (1.7 - 11.0)	10.7 (1.7 - 12.7)	13.3 (1.7 - 15.1)
	Rated Input Power	W	1923	2478	2995	3819
	Rated Input Current	A	8.57	10.94	16.75	16.75
	AEER	W/W	3.41	3.78	3.47	3.40
	Star Rating		2.0	3.0	2.0	2.0
Heating	Rated Capacity (Range)	kW	7.4 (1.8 - 9.6)	9.7 (1.8 - 11.0)	10.9 (1.8 - 13.5)	14.5 (1.8 - 15.5)
	Rated Input Power	W	1868	2580	2798	4167
	Rated Input Current	A	8.27	11.38	12.42	18.27
	ACOP	W/W	3.79	3.65	3.80	3.40
	Star Rating		3.0	2.5	3.0	2.0
Maximum Input Current		A	14.5	17.0	22.0	27.0
Compressor		Type	DC Twin Rotary			
Sound Power Level		dB(A)	69	69	73	73
Sound Pressure Level @ 1m			60	61	64	64
Dimensions	Net (W x D x H)	mm	845 x 363 x 702	946 x 410 x 810	946 x 410 x 810	952 x 415 x 1333
	Gross (W x D x H)		965 x 395 x 755	1090 x 500 x 865	1090 x 500 x 865	1095 x 495 x 1480
	Net / Gross Weight	kg	55 / 59	71 / 76	77 / 82	102 / 116
Refrigerant		Type	R410A			
Refrigerant Piping	Connection Size: Liquid Line	mm	3x φ6.35	4x φ6.35	5x φ6.35	5x φ6.35
	Connection Size: Gas		3x φ9.52	3x φ9.52, 1x φ12.7	4x φ9.52, 1x φ12.7	3x φ9.52, 2x φ12.7
	Maximum Total System Pipe Length	m	60	80	80	80
	Pre-Charged Length		30	40	50	50
	Maximum Length Per Indoor Unit		25	30	30	30
	Maximum Vertical Separation Outdoor Unit ABOVE Indoor Unit		10	10	10	10
	Maximum Vertical Separation Outdoor Unit BELOW Indoor Unit		15	15	15	15
Maximum Height Difference Between Indoor Units			10	10	10	10
24Ambient Temperature Limits	Cooling/ Heating	°C	-15 - 50 / -5 -24			

Technical Information

Wall Mounted



Wall Mounted Split System			HINRA20M	HINRA26M	HINRA35M	HINRA50M	HINRA70M
Power Supply		V-Ph-Hz	220-240 -1-50				
Cooling	Rated Capacity	kW	2.0	2.6	3.5	5.2	7.0
	Rated Input Power	W	20	20	30	30	58
	Rated Input Current	A	0.10	0.10	0.13	0.13	0.30
Heating	Rated Capacity	kW	2.3	2.8	3.8	5.1	7.5
	Rated Input Power	W	20	20	32	32	60
	Rated Input Current	A	0.11	0.11	0.15	0.15	0.33
Airflow (Hi / Med / Lo)		L/s	131 / 100 / 70	167 / 134 / 78	195 / 159 / 98	334 / 237 / 159	403 / 356 / 145
Sound Pressure (Hi / Med / Lo) @1.4m		dB(A)	40 / 35 / 28	43 / 37 / 28	45 / 38 / 28	45 / 42 / 29	49 / 44 / 32
Dimensions	Net (W x D x H)	mm	717 x 193 x 302	805 x 193 x 302	964 x 222 x 325	964 x 222 x 325	1106 x 232 x 342
	Gross (W x D x H)	mm	785 x 285 x 375	875 x 285 x 375	1045 x 305 x 405	1045 x 305 x 405	1195 x 315 x 420
	Net / Gross Weight	kg	7.0 / 9.3	8.5 / 11.0	10.3 / 14.0	10.4 / 14.1	13.7 / 17.6
	Refrigeration Pipe Size: Liquid / Gas	mm	Φ6.35 / Φ9.52	Φ6.35 / Φ9.52	Φ6.35 / Φ12.7	Φ6.35 / Φ12.7	Φ9.52 + Φ15.9
Controller		Type	Wireless Remote Control Standard / Wired Control Optional				
Operating Range	Cooling/ Heating	°C	17 - 32 / 0 - 30				
Wi-Fi Compatibility			Standard				

Slim Ducted



Slim Ducted			DINSD261M	DINSD351M	DINSD501M	DINSD701M
Power Supply		V-Ph-Hz	220-240 -1-50			
Cooling	Rated Capacity	kW	2.6	3.5	5.2	7.1
	Rated Input Power	W	80	80	120	120
	Rated Input Current	A	1.11	1.11	1.5	1.5
Heating	Rated Capacity	kW	2.9	3.3	5.5	7.3
	Rated Input Power	W	80	50	120	120
	Rated Input Current	A	0.11	1.11	1.5	1.5
Airflow (Hi / Med / Lo)		L/s	139 / 133 / 84	139 / 133 / 84	236 / 220 / 181	361 / 333 / 250
Maximum External Static Pressure (Hi)		Pa	60	60	100	160
Sound Pressure (Hi / Med / Lo) @1.4m		dB(A)	38 / 34 / 27	38 / 34 / 27	40 / 39 / 37	43 / 40 / 38
Dimensions	Net (W x D x H)	mm	700x506x200	700x506x200	880x674x210	1100x774x249
	Gross (W x D x H)	mm	860x540x275	860x540x275	1070x725x270	1305x805x305
	Net / Gross Weight	kg	18 / 22	18 / 22	23 / 29	30 / 37
	Supply Air Duct Connection (W x H)	mm	537 x 152	537 x 152	706 x 136	926 x 175
	Return Air Duct Connection (W x H)	mm	599 x 186	599 x 186	782 x 190	1001 x 228
	Refrigeration Pipe Size: Liquid / Gas	mm	Φ6.35 / Φ9.52	Φ6.35 / Φ9.52	Φ6.35 / Φ12.7	Φ9.52 + Φ15.9
Condensate Drain Pump Connection		mm	OD Φ25			
Controller		Type	Wired Controller - 12m Cable			
Operating Range	Cooling/ Heating	°C	17 - 32 / 0 - 30			
Wi-Fi Compatibility			Optional			

Compact Cassette



Multi Outdoor Unit			CIN020RM	CIN026RM	CIN035RM	CIN050RM
Fascia Panel		Model No.	CINFASM			
Power Supply (To Outdoor Unit)		V-Ph-Hz	220-240-1-50			
Cooling	Rated Capacity (Range)	kW	2.1	2.6	3.5	5.0
	Rated Input Power	W	40	40	40	40
	Rated Input Current	A	0.18	0.18	0.18	0.18
Heating	Rated Capacity (Range)	kW	2.2	2.9	4.1	5.5
	Rated Input Power	W	40	40	40	40
	Rated Input Current	A	0.18	0.18	0.18	0.18
Airflow (Hi / Med / Lo)		L/s	161 / 139 / 125	161 / 139 / 125	181 / 153 / 128	189 / 156 / 139
Sound Pressure Level (Hi / Med / Lo) @1.4m		dB(A)	39 / 36 / 34	39 / 36 / 34	41 / 37 / 34	43 / 38 / 36
Dimensions	Net (W x D x H)	mm	570 x 570 x 260	570 x 570 x 260	570 x 570 x 260	570 x 570 x 260
	Gross (W x D x H)		655 x 655 x 290	655 x 655 x 290	655 x 655 x 290	655 x 655 x 290
	Net Fascia (W x D x H)		647 x 647 x 50	647 x 647 x 50	647 x 647 x 50	647 x 647 x 50
	Gross Fascia (W x D x H)		715 x 715 x 123	715 x 715 x 123	715 x 715 x 123	715 x 715 x 123
	Net / Gross Weight (Body)	kg	14.5 / 17.3	14.5 / 17.3	14.5 / 17.3	16.1 / 18.9
	Net / Gross Weight (Fascia)		2.5 / 4.5	2.5 / 4.5	2.5 / 4.5	2.5 / 4.5
	Refrigeration Pipe Size: Liquid / Gas	mm	Φ6.35 / Φ9.52	Φ6.35 / Φ9.52	Φ6.35 / Φ9.52	Φ6.35 / Φ12.7
Condensate Drain Pump Connection		mm	OD Φ25			
Controller		Type	Wireless Remote Control Standard / Wired Control Optional			
Cooling/ Heating		oC	17 - 32 / 0 - 30			
Wi-Fi Compatibility			Optional			

Capacities tested in accordance with AS/NZS 3823.3, with 5m interconnecting length for all attached Indoor Units. With our policy of continuous improvement, we reserve the right to change, or discontinue at any time, specifications or designs without notice.
 Note: All images contained within this brochure are for illustrative purposes only, the colours and finishes of the products featured are as close to the respective product range as photographic lighting and printing processes allow.

Combination Table

For outdoor unit: MON3H071

Indoor Units	2.0kW	2.6kW	3.5 kW	5.0 kW	7.0 kW
Wall Mounted	HINRA20M	HINRA26M	HINRA35M	HINRA50M	HINRA70M
Slim Ducted		DINSD26IM	DINSD35IM	DINSD50IM	DINSD70IM
Compact Cassette	CIN020RM	CIN026RM	CIN035RM	CIN050RM	

Indoor Unit Combinations				Cooling						Heating					
Unit ID				Capacity of each Indoor Unit (kW)			System Capacity (kW)			Capacity of each Indoor Unit (kW)			System Capacity (kW)		
Operation	Unit A	Unit B	Unit C	Room A	Room B	Room C	Min	Rated	Max	Room A	Room B	Room C	Min	Rated	Max
1 Unit	20			2.85			1.71	2.85	3.65	2.96			1.78	2.96	3.79
	26			3.16			2.05	3.16	4.04	3.28			2.13	3.28	4.20
	35			3.68			2.39	3.68	4.71	3.75			2.44	3.75	4.80
	50			5.05			3.13	5.05	6.46	5.22			3.24	5.22	6.68
	70			7.08			4.39	7.08	9.06	6.55			4.06	6.55	8.38
2 Units	20	20		2.43	2.43		3.01	4.86	5.59	2.56	2.56		3.17	5.12	5.89
	20	26		2.28	2.97		3.26	5.25	6.04	2.37	3.08		3.38	5.45	6.27
	20	35		2.22	3.54		3.57	5.76	6.62	2.21	3.53		3.56	5.74	6.60
	20	50		1.87	4.67		4.05	6.54	7.52	1.95	4.88		4.23	6.83	7.85
	20	70		1.66	5.80		4.63	7.46	8.58	1.84	6.42		5.12	8.26	9.50
	26	26		2.72	2.72		3.38	5.45	6.27	2.79	2.79		3.46	5.58	6.42
	26	35		2.80	3.44		3.87	6.24	7.18	2.63	3.23		3.63	5.86	6.74
	26	50		2.31	4.44		4.18	6.75	7.76	2.51	4.83		4.55	7.34	8.44
	26	70		2.13	5.70		4.75	7.63	8.77	2.25	5.60		4.87	7.85	9.05
	35	35		3.36	3.36		4.17	6.72	7.73	3.36	3.36		4.17	6.72	7.73
	35	50		2.74	4.54		4.51	7.28	8.37	3.12	5.16		5.13	8.28	9.52
	35	70		2.72	5.03		4.80	7.75	8.92	2.88	5.42		5.15	8.30	9.55
	50	50		3.85	3.85		4.77	7.70	8.85	4.05	4.05		5.02	8.10	9.32
3 Units	20	20	20	2.20	2.20	2.20	4.09	6.60	7.59	2.27	2.27	2.27	4.22	6.80	7.82
	20	20	26	2.04	2.04	2.65	4.17	6.72	7.73	2.10	2.10	2.73	4.29	6.92	7.96
	20	20	35	1.82	1.82	2.91	4.06	6.55	7.62	1.87	1.87	3.01	4.16	6.75	7.76
	20	20	50	1.64	1.64	4.11	4.58	7.39	8.60	1.63	1.63	4.34	4.68	7.59	8.73
	20	20	70	1.45	1.45	5.08	4.95	7.99	9.29	1.66	1.66	4.42	4.77	7.73	8.90
	20	26	26	1.82	2.37	2.37	4.06	6.55	7.62	1.87	2.43	2.44	4.16	6.75	7.76
	20	26	35	1.85	2.40	2.96	4.47	7.21	8.39	1.90	2.47	3.05	4.57	7.41	8.53
	20	26	50	1.59	2.07	3.97	4.73	7.63	8.87	1.63	2.12	4.09	4.82	7.83	9.00
	20	35	35	1.68	2.93	2.93	4.67	7.54	8.77	1.72	3.00	3.02	4.77	7.73	8.90
	20	35	50	1.47	2.58	3.68	4.79	7.73	8.99	1.52	2.67	3.83	4.94	8.02	9.22
	26	26	26	2.35	2.35	2.35	4.37	7.05	8.20	2.43	2.43	2.44	4.50	7.30	8.40
	26	26	35	2.23	2.23	3.00	4.63	7.47	8.68	2.29	2.29	3.09	4.72	7.66	8.82
	26	26	50	1.96	1.96	3.77	4.76	7.68	8.94	1.99	1.99	3.85	4.82	7.83	9.00
	26	35	35	2.07	2.78	2.78	4.73	7.63	8.87	2.12	2.85	2.86	4.82	7.83	9.00
	26	35	50	1.87	2.52	3.60	4.96	8.00	9.30	1.81	2.44	3.49	4.77	7.73	8.90
35	35	35	2.58	2.58	2.58	4.79	7.73	9.30	2.67	2.67	2.68	4.94	8.02	9.22	

Capacities tested in accordance with AS/NZS 3823.3, with 5m interconnecting length for all attached Indoor Units. With our policy of continuous improvement, we reserve the right to change, or discontinue at any time, specifications or designs without notice.

Combination Table

For outdoor unit: MON4H09

Indoor Units	2.0kW	2.6kW	3.5 kW	5.0 kW	7.0 kW
Wall Mounted	HINRA20M	HINRA26M	HINRA35M	HINRA50M	HINRA70M
Slim Ducted		DINSD26IM	DINSD35IM	DINSD50IM	DINSD70IM
Compact Cassette	CIN020RM	CIN026RM	CIN035RM	CIN050RM	

Indoor Unit Combinations					Cooling						Heating							
Unit ID					Capacity of each Indoor Unit (kW)				System Capacity (kW)			Capacity of each Indoor Unit (kW)				System Capacity (kW)		
Operation	Unit A	Unit B	Unit C	Unit D	Room A	Room B	Room C	Room D	Min	Rated	Max	Room A	Room B	Room C	Room D	Min	Rated	Max
1 Unit	20				2.85				1.71	2.85	3.65	2.96				1.78	2.96	3.79
	26				3.16				2.05	3.16	4.04	3.28				2.13	3.28	4.20
	35				3.68				2.39	3.68	4.71	3.75				2.44	3.75	4.80
	50				5.05				3.13	5.05	6.46	5.22				3.24	5.22	6.68
	70				7.08				4.39	7.08	9.06	6.55				4.06	6.55	8.38
2 Units	20	20			2.43	2.43			3.01	4.86	5.59	2.56	2.56			3.17	5.12	5.89
	20	26			2.28	2.97			3.26	5.25	6.04	2.37	3.08			3.38	5.45	6.27
	20	35			2.22	3.54			3.57	5.76	6.62	2.21	3.53			3.56	5.74	6.60
	20	50			1.87	4.67			4.05	6.54	7.52	1.95	4.88			4.23	6.83	7.85
	20	70			1.66	5.80			4.63	7.46	8.58	1.84	6.42			5.12	8.26	9.50
	26	26			2.72	2.72			2.29	5.45	6.65	2.79	2.79			2.34	5.58	6.81
	26	35			2.80	3.44			2.62	6.24	7.61	2.63	3.23			2.46	5.86	7.15
	26	50			2.31	4.44			2.84	6.75	8.24	2.51	4.83			3.08	7.34	8.95
	26	70			2.13	5.75			4.89	7.88	9.06	2.25	6.07			5.16	8.32	9.57
	35	35			3.36	3.36			2.82	6.72	8.20	3.36	3.36			2.82	6.72	8.20
	35	50			2.74	4.54			3.06	7.28	8.88	3.12	5.16			3.48	8.28	10.10
	35	70			2.72	5.43			5.05	8.15	9.37	2.88	5.77			5.36	8.65	9.95
	50	50			4.04	4.04			3.40	8.09	9.87	4.04	4.04			3.40	8.09	9.87
3 Units	20	20	20		2.20	2.20	2.20		2.77	6.60	8.05	2.27	2.27	2.27		2.86	6.80	8.30
	20	20	26		2.04	2.04	2.65		2.82	6.72	8.20	2.10	2.10	2.73		2.91	6.92	8.44
	20	20	35		1.93	1.93	3.38		3.04	7.25	8.84	2.07	2.07	3.31		3.13	7.45	9.09
	20	20	50		1.82	1.82	4.54		3.44	8.18	9.98	1.80	1.80	4.78		3.52	8.38	10.22
	20	20	70		1.61	1.61	5.63		3.71	8.84	10.78	1.84	1.84	4.87		3.59	8.54	10.42
	20	26	26		2.01	2.62	2.62		3.04	7.25	8.84	2.07	2.69	2.69		3.13	7.45	9.09
	20	26	35		2.05	2.66	3.27		3.35	7.98	9.74	2.10	2.73	3.36		3.44	8.18	9.98
	20	26	50		1.78	2.32	4.46		3.60	8.56	10.44	1.78	2.32	4.46		3.60	8.56	10.44
	20	26	70		1.53	1.98	5.34		3.72	8.85	10.80	1.47	1.91	5.15		3.59	8.54	10.42
	20	35	35		1.85	3.24	3.24		3.50	8.34	10.17	1.90	3.32	3.32		3.59	8.54	10.42
	20	35	50		1.65	2.88	4.12		3.63	8.65	10.55	1.65	2.88	4.12		3.63	8.65	10.55
	26	26	26		2.60	2.60	2.60		3.28	7.80	9.52	2.69	2.69	2.69		3.39	8.06	9.83
	26	26	35		2.47	2.47	3.32		3.47	8.26	10.08	2.47	2.47	3.32		3.47	8.26	10.08
	26	26	50		2.19	2.19	4.22		3.61	8.60	10.49	2.19	2.19	4.22		3.61	8.60	10.49
	26	35	35		2.29	3.08	3.08		3.54	8.44	10.30	2.34	3.15	3.15		3.63	8.64	10.54
26	35	50		2.07	2.79	3.99		3.72	8.85	10.80	2.00	2.69	3.85		3.59	8.54	10.42	
35	35	35		2.85	2.85	2.85		3.59	8.55	10.43	2.95	2.95	2.95		3.72	8.85	10.80	
4 Units	20	20	20	20	1.90	1.90	1.90	1.90	2.45	7.60	9.27	1.95	1.95	1.95	1.95	2.45	7.80	9.52
	20	20	20	26	1.83	1.83	1.83	2.38	3.22	7.86	9.59	1.83	1.83	1.83	2.38	3.22	7.86	9.59
	20	20	20	35	1.77	1.77	1.77	2.83	3.34	8.15	9.94	1.79	1.79	1.79	2.87	3.38	8.25	10.06
	20	20	20	50	1.59	1.59	1.59	4.20	3.67	8.96	10.93	1.53	1.53	1.53	4.06	3.55	8.66	10.57
	20	20	26	26	1.75	1.75	2.28	2.28	3.31	8.07	9.85	1.80	1.80	2.34	2.34	3.39	8.27	10.09
	20	20	26	35	1.73	1.73	2.24	2.76	3.47	8.46	10.32	1.75	1.75	2.27	2.80	3.51	8.56	10.44
	20	20	35	35	1.67	1.67	2.66	2.66	3.55	8.66	10.57	1.70	1.70	2.73	2.73	3.63	8.86	10.81
	20	26	26	26	1.68	2.19	2.19	2.19	3.38	8.25	10.06	1.70	2.22	2.22	2.22	3.42	8.35	10.19
	20	26	26	35	1.70	2.20	2.20	2.71	3.62	8.82	10.76	1.72	2.23	2.23	2.74	3.66	8.92	10.88
	20	26	35	35	1.63	2.12	2.61	2.61	3.68	8.98	10.96	1.64	2.14	2.63	2.63	3.71	9.04	11.03
	26	26	26	26	2.13	2.13	2.13	2.13	3.49	8.52	10.39	2.16	2.16	2.16	2.16	3.53	8.62	10.52
	26	26	26	35	2.09	2.09	2.09	2.58	3.63	8.86	10.81	2.12	2.12	2.12	2.61	3.67	8.96	10.93

Capacities tested in accordance with AS/NZS3823.3, with 5m interconnecting length for all attached Indoor Units. With our policy of continuous improvement, we reserve the right to change, or discontinue at any time, specifications or designs without notice.

Combination Table

For outdoor unit: MON5H11

Indoor Units	2.0kW	2.6kW	3.5 kW	5.0 kW	7.0 kW
Wall Mounted	HINRA20M	HINRA26M	HINRA35M	HINRA50M	HINRA70M
Slim Ducted		DINSD26IM	DINSD35IM	DINSD50IM	DINSD70IM
Compact Cassette	CIN020RM	CIN026RM	CIN035RM	CIN050RM	

Indoor Unit Combinations						Cooling							Heating								
Unit ID						Capacity of each Indoor Unit (kW)					System Capacity (kW)			Capacity of each Indoor Unit (kW)					System Capacity (kW)		
Operation	Unit A	Unit B	Unit C	Unit D	Unit E	Room A	Room B	Room C	Room D	Room E	Min	Rated	Max	Room A	Room B	Room C	Room D	Room E	Min	Rated	Max
1 Unit	20					2.85					1.71	2.85	3.70	2.96					1.78	2.96	3.55
	26					3.16					1.90	3.16	3.79	3.28					1.97	3.28	3.94
	35					3.68					2.21	3.68	4.42	3.75					2.25	3.75	4.50
	50					5.05					3.03	5.05	5.81	5.22					3.13	5.22	6.00
	70					7.08					4.25	7.08	8.14	6.55					3.93	6.55	7.53
2 Units	20	20				2.43	2.43				3.01	4.86	5.59	2.56	2.56				3.17	5.12	5.89
	20	26				2.28	2.97				3.26	5.25	6.04	2.37	3.08				3.38	5.45	6.27
	20	35				2.22	3.54				3.57	5.76	6.62	2.21	3.53				3.56	5.74	6.60
	20	50				1.87	4.67				4.05	6.54	7.52	1.95	4.88				4.23	6.83	7.85
	20	70				1.66	5.80				4.63	7.46	8.58	1.84	6.42				5.12	8.26	9.50
	26	26				2.72	2.72				2.29	5.45	6.65	2.79	2.79				2.34	5.58	6.81
	26	35				2.80	3.44				2.62	6.24	7.61	2.63	3.23				2.46	5.86	7.15
	26	50				2.31	4.44				2.84	6.75	8.24	2.51	4.83				3.08	7.34	8.95
	26	70				2.13	5.75				4.89	7.88	9.06	2.25	6.07				5.16	8.32	9.57
	35	35				3.36	3.36				2.82	6.72	8.20	3.36	3.36				2.82	6.72	8.20
	35	50				2.74	4.54				3.06	7.28	8.88	3.12	5.16				3.48	8.28	10.10
35	70				2.72	5.43				5.05	8.15	9.37	2.88	5.77				5.36	8.65	9.95	
50	50				4.04	4.04				3.40	8.09	9.87	4.04	4.04				3.40	8.09	9.87	
3 Units	20	20	20			2.20	2.20	2.20			3.30	6.60	7.26	2.40	2.40	2.40			3.60	7.20	7.92
	20	20	26			2.20	2.20	2.86			3.63	7.26	7.99	2.40	2.40	3.12			3.96	7.92	8.71
	20	20	35			2.10	2.10	3.68			3.94	7.88	8.66	2.40	2.40	4.20			4.50	9.00	9.90
	20	20	50			2.10	2.10	5.25			4.72	9.45	9.92	2.20	2.20	5.50			4.95	9.90	10.40
	20	20	70			1.90	1.90	5.55			4.68	9.35	9.82	2.10	2.10	6.47			5.34	10.67	11.20
	20	26	26			2.20	2.86	2.86			3.96	7.92	8.71	2.40	3.12	3.12			4.32	8.64	9.50
	20	26	35			2.10	2.70	3.70			4.25	8.50	9.36	2.40	3.10	4.22			4.86	9.72	10.69
	20	26	50			2.10	2.65	4.66			4.70	9.41	9.88	2.30	2.76	5.50			5.28	10.56	11.09
	20	26	70			1.80	2.40	5.66			4.93	9.86	10.35	1.90	2.50	6.85			5.63	11.25	11.81
	20	35	35			2.08	3.55	3.55			4.59	9.18	9.64	2.40	3.90	4.05			5.18	10.35	10.87
	20	35	50			2.10	3.60	4.59			5.14	10.29	10.80	2.20	3.70	5.12			5.51	11.02	11.58
	20	35	70			1.80	3.20	5.63			5.31	10.62	11.16	1.90	3.40	6.82			6.06	12.12	12.73
	20	50	50			1.80	4.50	4.50			5.40	10.80	11.34	2.10	5.07	5.07			6.12	12.24	12.85
	20	50	70			1.80	4.10	5.30			5.60	11.20	11.42	1.90	4.12	6.30			6.16	12.32	12.57
	20	70	70			1.80	4.70	4.70			5.60	11.20	11.54	1.82	5.25	5.25			6.16	12.32	12.57
	26	26	26			2.86	2.86	2.86			4.29	8.58	9.44	3.12	3.12	3.12			4.68	9.36	10.30
	26	26	35			2.76	2.76	3.62			4.57	9.14	10.05	2.80	2.80	3.97			4.78	9.57	10.53
	26	26	50			2.40	2.40	4.38			4.59	9.18	10.10	2.65	2.65	5.41			5.36	10.71	11.78
	26	26	70			2.40	2.40	5.45			5.12	10.25	10.76	2.76	2.76	6.31			5.92	11.83	12.43
	26	35	35			2.63	3.63	3.63			4.94	9.89	10.88	2.90	3.83	3.83			5.28	10.56	11.62
	26	35	50			2.40	3.30	4.62			5.16	10.32	10.84	2.70	3.70	5.26			5.83	11.66	12.24
	26	35	70			2.30	3.05	5.13			5.24	10.48	11.00	2.50	3.40	6.54			6.22	12.44	13.07
	26	50	50			2.31	4.20	4.20			5.36	10.71	11.25	2.40	4.91	4.91			6.11	12.22	12.83
26	50	70			2.10	3.80	5.05			5.48	10.95	11.28	2.20	4.10	6.02			6.16	12.32	12.57	
35	35	35			3.36	3.36	3.36			5.04	10.08	10.58	3.85	3.85	3.85			5.78	11.55	12.13	
35	35	50			3.20	3.20	4.04			5.22	10.44	10.96	3.40	3.40	4.84			5.82	11.64	12.22	
35	35	70			2.90	2.90	5.12			5.46	10.92	11.79	3.10	3.10	6.12			6.16	12.32	12.57	
35	50	50			2.90	3.95	3.95			5.40	10.80	11.34	3.15	4.50	4.50			6.08	12.15	12.76	
35	50	70			2.40	3.80	4.96			5.58	11.16	11.49	2.80	3.90	5.62			6.16	12.32	12.57	

Indoor Unit Combinations						Cooling							Heating								
Operation	Unit ID					Capacity of each Indoor Unit (kW)					System Capacity (kW)			Capacity of each Indoor Unit (kW)					System Capacity (kW)		
	Unit A	Unit B	Unit C	Unit D	Unit E	Room A	Room B	Room C	Room D	Room E	Min	Rated	Max	Room A	Room B	Room C	Room D	Room E	Min	Rated	Max
4 Units	20	20	20	20		2.20	2.20	2.20	2.20		4.40	8.80	9.68	2.40	2.40	2.40	2.40		4.80	9.60	10.56
	20	20	20	26		2.10	2.10	2.10	2.73		4.52	9.03	9.93	2.20	2.20	2.20	2.86		4.73	9.46	10.41
	20	20	20	35		2.10	2.10	2.10	3.68		4.99	9.98	10.97	2.20	2.20	2.20	3.85		5.22	10.45	11.50
	20	20	20	50		2.05	2.05	2.05	4.30		5.22	10.45	11.50	2.05	2.05	2.05	5.18		5.66	11.33	12.46
	20	20	20	70		1.75	1.75	1.75	5.80		5.52	11.05	11.27	1.90	1.90	1.90	6.39		6.04	12.09	12.33
	20	20	26	26		2.10	2.10	2.73	2.73		4.83	9.66	10.63	2.20	2.20	2.86	2.86		5.06	10.12	11.13
	20	20	26	35		2.05	2.05	2.70	3.60		5.20	10.40	11.44	2.20	2.20	2.90	3.81		5.56	11.11	12.22
	20	20	26	50		1.90	1.90	2.50	4.37		5.34	10.67	11.74	2.10	2.10	2.80	4.83		5.92	11.83	13.02
	20	20	26	70		1.75	1.75	2.20	5.86		5.78	11.56	11.79	1.80	1.80	2.40	6.24		6.12	12.24	12.48
	20	20	35	35		1.90	1.90	3.32	3.33		5.22	10.45	11.50	2.02	2.02	3.23	4.28		5.78	11.55	12.70
	20	20	35	50		1.80	1.80	3.20	4.45		5.62	11.25	11.59	2.02	2.02	3.40	4.69		6.06	12.12	13.34
	20	20	35	70		1.60	1.60	2.90	5.50		5.80	11.60	11.83	1.80	1.80	2.90	5.82		6.16	12.32	12.57
	20	20	50	50		1.85	1.85	4.10	4.10		5.95	11.90	12.14	1.70	1.70	4.46	4.46		6.16	12.32	12.57
	20	20	50	70		1.60	1.60	3.90	4.90		6.00	12.00	12.24	1.70	1.70	3.90	5.02		6.16	12.32	12.57
	20	26	26	26		2.13	2.72	2.72	2.72		5.14	10.29	10.50	2.20	2.86	2.86	2.86		5.39	10.78	11.00
	20	26	26	35		1.95	2.55	2.55	3.44		5.24	10.49	10.70	2.20	2.70	2.70	3.64		5.62	11.24	11.46
	20	26	26	50		1.90	2.50	2.50	4.08		5.49	10.98	11.20	2.10	2.50	2.50	4.73		5.92	11.83	12.07
	20	26	35	35		1.90	2.45	3.22	3.22		5.39	10.79	11.00	2.13	2.70	3.50	3.50		5.92	11.83	12.07
	20	26	35	50		1.80	2.30	2.90	4.14		5.57	11.14	11.36	1.90	2.50	3.40	4.38		6.09	12.18	12.43
	20	26	35	70		1.60	2.20	2.70	5.43		5.96	11.93	12.17	1.80	1.80	3.10	5.62		6.16	12.32	12.57
	20	26	50	50		1.60	2.20	3.94	3.94		5.84	11.68	11.91	1.81	2.30	4.15	4.15		6.20	12.41	12.66
	20	35	35	35		1.83	3.14	3.14	3.14		5.62	11.25	11.48	2.11	3.34	3.34	3.34		6.06	12.12	12.37
	20	35	35	50		1.80	3.10	3.10	3.90		5.95	11.90	12.14	1.90	3.20	3.20	4.02		6.16	12.32	12.57
	20	35	35	70		1.60	2.70	2.70	5.00		6.00	12.00	12.24	1.70	2.80	2.80	5.02		6.16	12.32	12.57
	26	26	26	26		2.58	2.57	2.57	2.58		5.15	10.30	10.50	2.52	2.52	2.52	2.53		5.04	10.09	10.29
	26	26	26	35		2.52	2.52	2.52	3.40		5.48	10.96	11.18	2.52	2.52	2.52	3.40		5.48	10.96	11.18
	26	26	26	50		2.40	2.40	2.40	4.06		5.63	11.26	11.49	2.60	2.60	2.60	3.72		5.76	11.52	11.75
	26	26	26	70		2.20	2.20	2.20	4.94		5.77	11.54	11.77	2.20	2.20	2.20	5.72		6.16	12.32	12.57
	26	26	35	35		2.30	2.30	3.07	3.07		5.37	10.74	10.95	2.52	2.52	3.40	3.39		5.92	11.83	12.07
	26	26	35	50		2.30	2.30	3.10	3.94		5.82	11.64	11.88	2.40	2.40	3.20	4.19		6.10	12.19	12.44
	26	26	35	70		2.10	2.10	2.80	5.00		6.00	12.00	12.24	2.10	2.10	2.90	5.22		6.16	12.32	12.57
	26	35	35	35		2.32	2.94	2.94	2.94		5.57	11.14	11.36	2.40	3.13	3.13	3.13		5.90	11.79	12.03
	26	35	35	50		2.10	2.80	2.80	3.98		5.84	11.68	11.91	2.10	3.10	3.10	4.02		6.16	12.32	12.57
	35	35	35	35		2.80	2.80	2.80	2.80		5.60	11.20	11.42	3.08	3.08	3.08	3.08		6.16	12.32	12.57
	35	35	35	50		2.70	2.70	2.70	3.90		6.00	12.00	12.24	2.80	2.80	2.80	3.92		6.16	12.32	12.57
20	20	20	20	20	20	2.08	2.08	2.08	2.08	2.08	5.25	10.40	11.02	2.20	2.20	2.20	2.20	2.20	5.50	11.00	11.55
20	20	20	20	20	26	2.03	2.03	2.03	2.03	2.68	5.56	10.80	11.59	2.10	2.10	2.10	2.10	2.73	5.56	11.13	11.69
20	20	20	20	20	35	1.95	1.95	1.95	1.95	3.47	5.64	11.27	11.83	2.10	2.10	2.10	2.10	3.33	5.86	11.73	12.32
20	20	20	20	20	50	1.74	1.74	1.74	1.74	4.75	5.85	11.70	12.28	1.90	1.90	1.90	1.90	4.75	6.18	12.35	12.97
20	20	20	20	20	70	1.70	1.70	1.70	1.70	5.28	6.04	12.08	12.68	1.80	1.80	1.80	1.80	5.64	6.42	12.84	13.48
20	20	20	26	26	26	1.90	1.90	1.90	2.58	2.58	5.43	10.86	11.41	1.90	1.90	1.90	2.58	2.58	5.43	10.86	11.41
20	20	20	26	35	1.90	1.90	1.90	2.50	3.29	5.75	11.50	12.07	1.90	1.90	1.90	2.50	3.30	5.75	11.50	12.07	
20	20	20	26	50	1.79	1.79	1.79	2.33	4.25	5.98	11.97	12.57	1.90	1.90	1.90	2.50	4.04	6.12	12.24	12.85	
20	20	20	26	70	1.60	1.60	1.60	2.10	5.18	6.04	12.08	12.68	1.70	1.70	1.70	2.40	5.34	6.42	12.84	13.48	
20	20	20	35	35	1.70	1.70	1.70	3.17	3.17	5.72	11.44	12.01	1.80	1.80	1.80	3.15	3.15	5.85	11.70	12.28	
20	20	20	35	50	1.70	1.70	1.70	2.90	4.08	6.04	12.08	12.68	1.80	1.80	1.80	3.00	4.44	6.42	12.84	13.48	
20	20	26	26	26	1.90	1.90	2.47	2.47	2.47	5.60	11.21	11.77	2.05	2.05	2.65	2.65	2.64	6.02	12.04	12.64	
20	20	26	26	35	1.80	1.80	2.40	2.40	3.03	5.72	11.43	12.00	1.90	1.90	2.50	2.50	3.26	6.03	12.06	12.67	
20	20	26	26	50	1.70	1.70	2.20	2.20	4.28	6.04	12.08	12.68	1.80	1.80	2.30	2.30	4.64	6.42	12.84	13.48	
20	20	26	35	35	1.70	1.70	2.30	2.93	2.93	5.78	11.56	12.14	1.80	1.80	2.30	3.17	3.17	6.12	12.24	12.85	
20	20	26	35	50	1.70	1.70	2.20	2.80	3.68	6.04	12.08	12.68	1.80	1.80	2.20	2.90	4.14	6.42	12.84	13.48	
20	20	35	35	35	1.66	1.66	2.76	2.76	2.76	5.80	11.60	12.18	1.82	1.82	3.04	3.04	3.04	6.38	12.76	13.40	
20	20	35	35	50	1.70	1.70	2.50	2.50	3.68	6.04	12.08	12.68	1.70	1.70	2.80	2.80	3.84	6.42	12.84	13.48	
20	26	26	26	26	1.80	2.34	2.34	2.34	2.34	5.58	11.16	11.72	1.91	2.53	2.53	2.53	2.53	6.01	12.03	12.63	
20	26	26	26	35	1.80	2.34	2.34	2.34	3.06	5.94	11.88	12.47	1.80	2.40	2.40	2.40	2.88	5.94	11.88	12.47	
20	26	26	26	50	1.70	2.20	2.20	2.20	3.78	6.04	12.08	12.68	1.80	2.20	2.20	2.20	4.44	6.42	12.84	13.48	
20	26	26	35	35	1.71	2.20	2.20	2.98	2.98	6.04	12.07	12.67	1.80	2.30	2.30	3.19	3.19	6.39	12.78	13.42	
20	26	26	35	50	1.70	2.10	2.10	2.50	3.68	6.04	12.08	12.68	1.70	2.10	2.10	2.90	4.04	6.42	12.84	13.48	
20	26	35	35	35	1.70	2.10	2.76	2.76	2.76	6.04	12.08	12.68	1.70	2.14	3.00	3.00	3.00	6.42	12.84	13.48	
26	35	35	35	35	1.68	2.60	2.60	2.60	2.60	6.04	12.08	12.68	1.64	2.80	2.80	2.80	2.80	6.42	12.84	13.48	
26	26	26	26	26	2.34	2.34	2.34	2.34	2.34	5.85	11.70	12.28	2.34	2.34	2.34	2.34	2.34	5.85	11.70	12.28	
26	26	26	26	35	2.20	2.20	2.20	2.20	2.20	5.90	11.70	12.28	2.30	2.30	2.30	2.30	3.04	6.12	12.24	12.85	
26	26	26	26	50	2.02	2.02	2.02	2.02	4.00	6.04	12.08	12.68	2.10	2.10	2.10	2.10	4.44	6.42	12.84	13.48	
26	26	26	35	35	2.11	2.11	2.11	2.87	2.87	6.04	12.07	12.67	2.20	2.20	2.20	2.95	2.95	6.25	12.50	13.12	
26	26	35	35	35	1.99	1.99	2.70	2.70	2.70	6.04	12.08	12.68	2.10	2.10	2.88	2.88	2.88	6.42	12.84	13.48	

Capacities tested in accordance with AS/NZS 3823.3, with 5m interconnecting length for all attached Indoor Units. With our policy of continuous improvement, we reserve the right to change, or discontinue at any time, specifications or designs without notice.

Combination Table

For outdoor unit: MON5H13

Indoor Units	2.0kW	2.6kW	3.5 kW	5.0 kW	7.0 kW
Wall Mounted	HINRA20M	HINRA26M	HINRA35M	HINRA50M	HINRA70M
Slim Ducted		DINSD26IM	DINSD35IM	DINSD50IM	DINSD70IM
Compact Cassette	CIN020RM	CIN026RM	CIN035RM	CIN050RM	

Indoor Unit Combinations						Cooling							Heating									
Operation	Unit ID					Capacity of each Indoor Unit (kW)					System Capacity (kW)			Capacity of each Indoor Unit (kW)					System Capacity (kW)			
	Unit A	Unit B	Unit C	Unit D	Unit E	Room A	Room B	Room C	Room D	Room E	Min	Rated	Max	Room A	Room B	Room C	Room D	Room E	Min	Rated	Max	
1 Unit	20					2.85					1.71	2.85	3.70	2.96					1.78	2.96	3.55	
	26					3.16					1.90	3.16	3.79	3.28					1.97	3.28	3.94	
	35					3.68					2.21	3.68	4.42	3.75					2.25	3.75	4.50	
	50					5.05					3.03	5.05	5.81	5.22					3.13	5.22	6.00	
	70					7.08					4.25	7.08	8.14	6.55					3.93	6.55	7.53	
2 Units	20	20				2.20	2.20				2.64	4.40	5.06	2.60	2.60					3.12	5.20	5.98
	20	26				2.30	2.76				3.04	5.06	5.82	2.30	3.22					3.31	5.52	6.35
	20	35				2.30	3.75				3.63	6.05	6.96	2.40	4.20					3.96	6.60	7.59
	20	50				2.20	5.50				3.85	7.70	8.86	2.40	5.30					3.85	7.70	8.86
	20	70				1.90	6.83				4.36	8.73	9.17	2.10	7.08					4.59	9.18	9.64
	26	26				2.86	2.86				3.43	5.72	6.58	3.12	3.12					3.74	6.24	7.18
	26	35				2.90	3.81				3.36	6.71	7.72	3.20	4.12					3.66	7.32	8.42
	26	50				2.90	5.08				3.99	7.98	9.18	3.05	5.31					4.18	8.36	9.61
	26	70				2.50	6.81				4.66	9.31	9.78	2.70	7.09					4.90	9.79	10.28
	35	35				3.64	3.64				3.64	7.28	8.37	4.20	4.20					4.20	8.40	9.66
	35	50				3.40	4.93				4.16	8.33	9.58	3.80	5.12					4.46	8.92	10.26
	35	70				3.40	6.79				5.09	10.18	10.69	3.70	7.12					5.41	10.82	11.36
	50	50				4.85	4.85				4.85	9.70	10.18	5.05	5.05					5.05	10.10	10.60
	50	70				4.20	6.24				5.22	10.44	10.96	4.90	6.50					5.70	11.40	11.97
70	70				5.95	5.95				5.95	11.90	12.02	6.16	6.16					6.16	12.32	12.44	
3 Units	20	20	20			2.20	2.20	2.20			3.30	6.60	7.26	2.40	2.40	2.40				3.60	7.20	7.92
	20	20	26			2.20	2.20	2.86			3.63	7.26	7.99	2.40	2.40	3.12				3.96	7.92	8.71
	20	20	35			2.10	2.10	3.68			3.94	7.88	8.66	2.40	2.40	4.20				4.50	9.00	9.90
	20	20	50			2.10	2.10	5.25			4.72	9.45	9.92	2.20	2.20	5.50				4.95	9.90	10.40
	20	20	70			2.00	2.00	5.68			4.84	9.68	10.16	2.10	2.10	6.47				5.34	10.67	11.20
	20	26	26			2.20	2.86	2.86			3.96	7.92	8.71	2.40	3.12	3.12				4.32	8.64	9.50
	20	26	35			2.10	2.70	3.70			4.25	8.50	9.36	2.40	3.10	4.22				4.86	9.72	10.69
	20	26	50			2.10	2.65	4.66			4.70	9.41	9.88	2.30	2.76	5.50				5.28	10.56	11.09
	20	26	70			2.38	2.40	5.66			5.22	10.44	10.96	1.90	2.50	6.85				5.63	11.25	11.81
	20	35	35			2.08	3.55	3.55			4.59	9.18	9.64	2.40	3.90	4.05				5.18	10.35	10.87
	20	35	50			2.10	3.60	4.59			5.14	10.29	10.80	2.20	3.70	5.12				5.51	11.02	11.58
	20	35	70			2.10	3.20	5.70			5.50	11.00	11.55	1.90	3.40	6.82				6.06	12.12	12.73
	20	50	50			1.80	4.50	4.50			5.40	10.80	11.34	2.10	5.07	5.07				6.12	12.24	12.85
	20	50	70			1.90	4.10	5.76			5.88	11.76	12.00	1.90	4.12	6.30				6.16	12.32	12.57
	20	70	70			1.80	5.50	5.50			6.40	12.80	13.18	1.90	6.05	6.05				7.00	14.00	14.28
	26	26	26			2.86	2.86	2.86			4.29	8.58	9.44	3.12	3.12	3.12				4.68	9.36	10.30
	26	26	35			2.76	2.76	3.62			4.57	9.14	10.05	2.80	2.80	3.97				4.78	9.57	10.53
	26	26	50			2.40	2.40	4.38			4.59	9.18	10.10	2.65	2.65	5.41				5.36	10.71	11.78
	26	26	70			2.40	2.40	5.45			5.12	10.25	10.76	6.31	2.76	2.76				5.92	11.83	12.43
	26	35	35			2.63	3.63	3.63			4.94	9.89	10.88	2.90	3.83	3.83				5.28	10.56	11.62
	26	35	50			2.40	3.30	4.62			5.16	10.32	10.84	2.70	3.70	5.26				5.83	11.66	12.24
	26	35	70			2.39	3.05	5.69			5.57	11.14	11.69	2.50	3.40	6.54				6.22	12.44	13.07
	26	50	50			2.31	4.20	4.20			5.36	10.71	11.25	2.40	4.91	4.91				6.11	12.22	12.83
	26	50	70			2.10	4.10	5.92			6.06	12.12	12.48	2.50	4.50	6.50				6.75	13.50	13.77
	26	70	70			2.35	5.30	5.30			6.47	12.95	13.34	2.40	5.80	5.80				7.00	14.00	14.28
	35	35	35			3.36	3.36	3.36			5.04	10.08	10.58	3.85	3.85	3.85				5.78	11.55	12.13
	35	35	50			3.20	3.20	4.04			5.22	10.44	10.96	3.40	3.40	4.84				5.82	11.64	12.22
	35	35	70			2.95	2.96	5.99			5.95	11.90	12.85	3.40	3.40	6.50				6.65	13.30	13.57
35	50	50			2.90	4.30	4.30			5.87	11.50	12.33	3.15	4.50	4.50				6.08	12.15	12.76	
35	50	70			2.86	4.10	5.90			6.43	12.86	13.25	3.30	4.30	6.40				7.00	14.00	14.28	
35	70	70			2.95	5.35	5.35			6.82	13.65	14.06	3.20	5.40	5.40				7.00	14.00	14.28	
4 Units	20	20	20	20		2.20	2.20	2.20	2.20		4.40	8.80	9.68	2.40	2.40	2.40	2.40			4.80	9.60	10.56
	20	20	20	26		2.10	2.10	2.10	2.73		4.52	9.03	9.93	2.20	2.20	2.20	2.86			4.73	9.46	10.41
	20	20	20	35		2.10	2.10	2.10	3.68		4.99	9.98	10.97	2.20	2.20	2.20	3.85			5.22	10.45	11.50
	20	20	20	50		2.05	2.05	2.05	4.30		5.22	10.45	11.50	2.05	2.05	2.05	5.18			5.66	11.33	12.46
	20	20	20	70		1.75	1.75	1.75	5.80		5.52	11.05	11.27	1.90	1.90	1.90	6.39			6.04	12.09	12.33
	20	20	26	26		2.10	2.10	2.73	2.73		4.83	9.66	10.63	2.20	2.20	2.86	2.86			5.06	10.12	11.13
	20	20	26	35		2.05	2.05	2.70	3.60		5.20	10.40	11.44	2.20	2.20	2.90	3.81			5.56	11.11	12.22
	20	20	26	50		1.90	1.90	2.50	4.37		5.34	10.67	11.74	2.10	2.10	2.80	4.83			5.92	11.83	13.02
	20	20	26	70		1.79	1.79	2.40	5.99		5.98	11.97	12.21	1.80	1.80	2.40	6.24			6.12	12.24	12.48
	20	20	35	35		1.90	1.90	3.32	3.33		5.22	10.45	11.50	2.02	2.02	3.23	4.28			5.78	11.55	12.70
	20	20	35	50		1.80	1.80	3.20	4.45		5.62	11.25	11.59	2.02	2.02	3.40	4.69			6.06	12.12	13.34
	20	20	35	70		1.80	1.80	3.20	6.10		6.45	12.90	13.16	1.95	1.95	3.40	6.70			7.00	14.00	14.28
	20	20	50	50		1.85	1.85	4.38	4.38		6.23	12.46	12.71	1.90	1.90	4.89	4.89			6.79	13.58	13.85

Indoor Unit Combinations						Cooling							Heating									
Operation	Unit ID					Capacity of each Indoor Unit (kW)					System Capacity (kW)			Capacity of each Indoor Unit (kW)					System Capacity (kW)			
	Unit A	Unit B	Unit C	Unit D	Unit E	Room A	Room B	Room C	Room D	Room E	Min	Rated	Max	Room A	Room B	Room C	Room D	Room E	Min	Rated	Max	
4 Units	20	20	50	70		1.80	1.80	4.20	5.80		6.80	13.60	13.87	1.90	1.90	4.40	6.00		7.10	14.20	14.48	
	20	26	26	26		2.13	2.72	2.72	2.72		5.14	10.29	10.50	2.20	2.86	2.86	2.86		5.39	10.78	11.00	
	20	26	26	35		1.95	2.55	2.55	3.44		5.24	10.49	10.70	2.20	2.70	2.70	3.64		5.62	11.24	11.46	
	20	26	26	50		1.90	2.50	2.50	4.08		5.49	10.98	11.20	2.10	2.50	2.50	4.73		5.92	11.83	12.07	
	20	26	35	35		1.90	2.45	3.22	3.22		5.39	10.79	11.00	2.13	2.70	3.50	3.50		5.92	11.83	12.07	
	20	26	35	50		1.80	2.30	2.90	4.14		5.57	11.14	11.36	1.98	2.55	3.40	4.91		6.42	12.84	13.09	
	20	26	35	70		1.80	2.30	3.10	6.09		6.64	13.29	13.55	1.90	2.50	3.30	6.50		7.10	14.20	14.48	
	20	26	50	50		1.80	2.45	4.37	4.37		6.50	12.99	13.25	1.98	2.55	4.89	4.89		7.15	14.31	14.59	
	20	26	50	70		1.80	2.20	4.20	5.50		6.85	13.70	13.97	1.90	2.50	4.10	6.00		7.25	14.50	14.79	
	20	35	35	35		1.83	3.14	3.14	3.14		5.62	11.25	11.48	2.11	3.34	3.34	3.34		6.06	12.12	12.37	
	20	35	35	50		1.80	3.10	3.10	4.46		6.23	12.46	12.71	1.92	3.45	3.45	4.90		6.86	13.72	13.99	
	20	35	35	70		1.80	3.10	3.10	5.60		6.80	13.60	13.87	1.80	3.20	3.20	6.00		7.10	14.20	14.48	
	20	35	50	50		1.90	3.11	4.24	4.24		6.74	13.48	13.75	1.90	3.30	4.50	4.50		7.10	14.20	14.48	
	26	26	26	26		2.58	2.57	2.57	2.58		5.15	10.30	10.50	2.52	2.52	2.52	2.53		5.04	10.09	10.29	
	26	26	26	35		2.52	2.52	2.52	3.40		5.48	10.96	11.18	2.52	2.52	2.52	3.40		5.48	10.96	11.18	
	26	26	26	50		2.40	2.40	2.40	4.06		5.63	11.26	11.49	2.60	2.60	2.60	3.72		5.76	11.52	11.75	
	26	26	26	70		2.35	2.35	2.35	6.12		6.59	13.17	13.44	2.50	2.50	2.50	6.70		7.10	14.20	14.48	
	26	26	35	35		2.30	2.30	3.07	3.07		5.37	10.74	10.95	2.52	2.52	3.40	3.39		5.92	11.83	12.07	
	26	26	35	50		2.30	2.30	3.20	4.39		6.10	12.19	12.44	2.52	2.52	3.45	4.94		6.71	13.43	13.69	
	26	26	35	70		2.10	2.10	3.10	6.04		6.67	13.34	13.61	2.50	2.50	3.20	6.00		7.10	14.20	14.48	
	26	26	50	50		2.30	2.30	4.31	4.31		6.61	13.22	13.49	2.50	2.50	4.60	4.60		7.10	14.20	14.48	
	26	26	50	70		2.20	2.20	4.10	5.26		6.88	13.76	14.04	2.30	2.30	4.10	5.50		7.25	14.50	14.79	
	26	35	35	35		2.36	3.10	3.10	3.10		5.83	11.66	11.89	2.49	3.45	3.45	3.45		6.42	12.84	13.09	
	26	35	35	50		2.30	3.20	3.20	4.29		6.50	12.99	13.25	2.50	3.40	3.40	4.90		7.10	14.20	14.48	
	26	35	35	70		2.30	2.90	2.90	5.60		6.85	13.70	13.97	2.30	3.20	3.20	5.80		7.25	14.50	14.79	
	26	35	50	50		2.20	2.90	4.21	4.21		6.76	13.52	13.79	2.40	3.30	4.40	4.40		7.25	14.50	14.79	
	35	35	35	35		3.08	3.08	3.08	3.08		6.16	12.32	12.57	3.43	3.43	3.43	3.43		6.86	13.72	13.99	
	35	35	35	50		3.10	3.10	3.10	4.18		6.74	13.48	13.75	3.30	3.30	3.30	4.30		7.10	14.20	14.48	
	35	35	35	70		2.90	2.90	2.90	5.10		6.90	13.80	14.08	3.00	3.00	3.00	5.50		7.25	14.50	14.79	
	35	35	50	50		2.90	2.90	4.00	4.00		6.90	13.80	14.08	2.80	2.80	3.90	5.00		7.25	14.50	14.79	
	35	35	50	70		2.80	2.80	3.90	4.50		7.00	14.00	14.28	2.70	2.70	3.90	5.20		7.25	14.50	14.79	
	5 Units	20	20	20	20	20	2.08	2.08	2.08	2.08	2.08	5.25	10.40	11.02	2.20	2.20	2.20	2.20	2.20	5.50	11.00	11.55
		20	20	20	20	26	2.03	2.03	2.03	2.03	2.68	5.56	10.80	11.59	2.10	2.10	2.10	2.10	2.73	5.56	11.13	11.69
		20	20	20	20	35	1.95	1.95	1.95	1.95	3.47	5.64	11.27	11.83	2.10	2.10	2.10	3.33	5.86	11.73	12.32	
		20	20	20	20	50	1.98	1.98	1.98	1.98	4.95	6.44	12.87	13.51	1.95	1.95	1.95	1.95	4.94	6.37	12.74	13.38
20		20	20	20	70	1.90	1.90	1.90	1.90	6.40	7.00	14.00	15.12	1.95	1.95	1.95	1.95	6.70	7.25	14.50	15.22	
20		20	20	26	26	1.90	1.90	1.90	2.58	2.58	5.43	10.86	11.41	1.90	1.90	1.90	2.58	2.58	5.43	10.86	11.41	
20		20	20	26	35	1.97	1.97	1.97	2.55	3.52	5.99	11.98	12.58	1.95	1.95	1.95	2.55	3.46	5.93	11.86	12.45	
20		20	20	26	50	1.95	1.95	1.95	2.55	4.93	6.66	13.33	13.99	1.95	1.95	1.95	2.55	4.93	6.66	13.33	13.99	
20		20	20	26	70	1.90	1.90	1.90	2.40	5.90	7.00	14.00	15.12	1.90	1.90	1.90	2.50	6.30	7.25	14.50	15.22	
20		20	20	35	35	1.96	1.96	1.96	3.43	3.43	6.37	12.74	13.38	1.94	1.94	1.94	3.46	3.46	6.37	12.74	13.38	
20		20	20	35	50	1.80	1.80	1.80	2.90	5.70	7.00	14.00	15.12	1.95	1.95	1.95	3.30	4.85	7.00	14.00	14.70	
20		20	20	35	70	1.80	1.80	1.80	3.10	5.50	7.00	14.00	15.12	1.90	1.90	1.90	3.10	6.00	7.40	14.80	15.54	
20		20	20	50	50	1.80	1.80	1.80	4.30	4.30	7.00	14.00	15.12	1.90	1.90	1.90	4.55	4.55	7.40	14.80	15.54	
20		20	26	26	26	1.95	1.95	2.55	2.55	2.56	5.78	11.56	12.14	1.94	1.94	2.56	2.56	2.56	5.78	11.56	12.14	
20		20	26	26	35	1.95	1.95	2.55	2.55	3.45	6.22	12.45	13.07	1.95	1.95	2.56	2.56	3.43	6.22	12.45	13.07	
20		20	26	26	50	2.00	2.00	2.55	2.55	4.90	7.00	14.00	15.12	1.95	1.95	2.55	2.55	5.00	7.00	14.00	14.70	
20		20	26	26	70	1.80	1.80	2.40	2.40	5.60	7.00	14.00	15.12	1.80	1.80	2.40	2.40	5.60	7.00	14.00	14.70	
20		20	26	35	35	1.95	1.95	2.55	3.44	3.44	6.66	13.33	13.99	1.95	1.95	2.53	3.45	3.45	6.66	13.33	13.99	
20		20	26	35	50	1.80	1.80	2.50	3.40	4.50	7.00	14.00	15.12	1.90	1.90	2.40	3.20	4.60	7.00	14.00	14.70	
20		20	26	35	70	1.80	1.80	2.30	3.10	5.00	7.00	14.00	15.12	1.80	1.80	2.50	3.20	5.50	7.40	14.80	15.54	
20		20	35	35	35	1.90	1.90	3.40	3.40	3.40	7.00	14.00	14.70	1.96	1.96	3.43	3.43	3.43	7.10	14.21	14.92	
20		20	35	35	50	1.80	1.80	3.10	3.10	4.20	7.00	14.00	15.12	1.80	1.80	3.10	3.10	4.20	7.00	14.00	14.70	
20		20	35	35	70	1.80	1.80	2.80	2.80	4.80	7.00	14.00	15.12	1.80	1.80	2.90	2.90	5.40	7.40	14.80	15.54	
20		20	35	50	50	1.80	1.80	2.80	3.80	3.80	7.00	14.00	15.12	1.80	1.80	3.10	4.05	4.05	7.40	14.80	15.54	
20		26	26	26	26	2.00	2.60	2.60	2.60	2.60	6.20	12.40	13.02	2.00	2.54	2.54	2.54	2.53	6.08	12.15	12.76	
20		26	26	26	35	2.00	2.60	2.60	2.60	3.40	6.60	13.20	13.86	1.95	2.55	2.55	2.55	3.34	6.47	12.94	13.58	
20		26	26	26	50	1.90	2.50	2.50	2.50	4.60	7.00	14.00	15.12	1.90	2.50	2.50	4.60	7.00	14.00	14.70		
20		26	26	26	70	1.80	2.30	2.30	2.30	5.30	7.00	14.00	15.12	1.80	2.40	2.40	5.80	7.40	14.80	15.54		
20		26	26	35	35	1.95	2.51	2.51	3.40	3.40	6.89	13.77	14.46	1.96	2.55	2.55	3.43	3.43	6.96	13.92	14.61	
20		26	26	35	50	1.80	2.50	2.50	3.10	4.10	7.00	14.00	15.12	1.90	2.50	2.50	2.80	4.30	7.00	14.00	14.70	
20		26	26	35	70	1.80	2.20	2.20	2.80	5.00	7.00	14.00	15.12	1.80	2.40	2.40	3.00	5.20	7.40	14.80	15.54	
20		26	26	50	50	1.80	2.20	2.20	3.90	3.90	7.00	14.00	15.12	1.80	2.40	2.40	4.10	4.10	7.40	14.80	15.54	
20		26	35	35	35	1.90	2.35	3.25	3.25	3.25	7.00	14.00	14.70	1.95	2.55	3.28	3.28	3.28	7.17	14.34	15.06	
20		26	35	35	50	1.80	2.20	2.80	2.80	4.40	7.00	14.00	15.12	1.80	2.40	3.20	3.20	4.20	7.40	14.80	15.54	
20		26	35	35	70	1.70	2.10	2.70	2.70	4.80	7.00	14.00	15.12	1.80	2.20	2.90	2.90	5.00	7.40	14.80	15.54	
20		35	35	35	35	1.																

Rinnai Australia Pty Ltd

ABN 74 005 138 769

100 Atlantic Drive,
Keysborough, Victoria 3173

For further information
call 1300 555 545 or visit
rinnai.com.au

TOTAL HOME COMFORT



HOT WATER



HEATING



COOLING

Rinnai